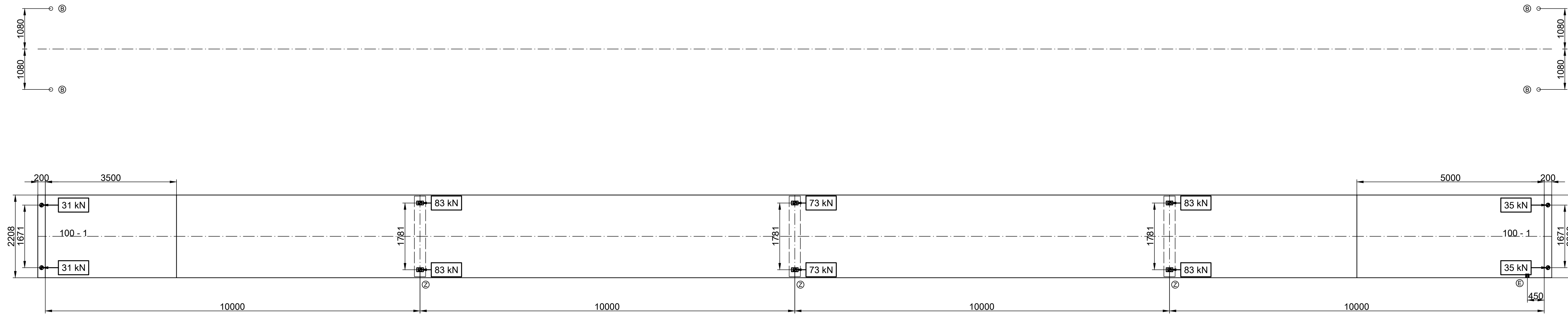
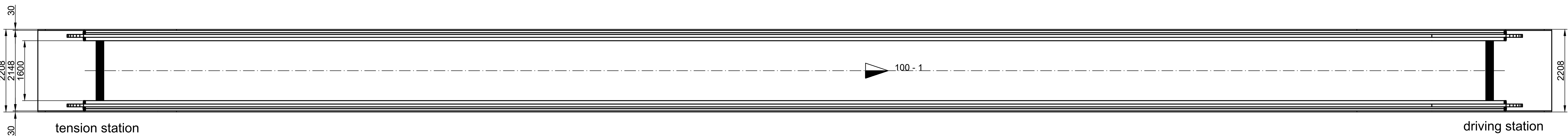
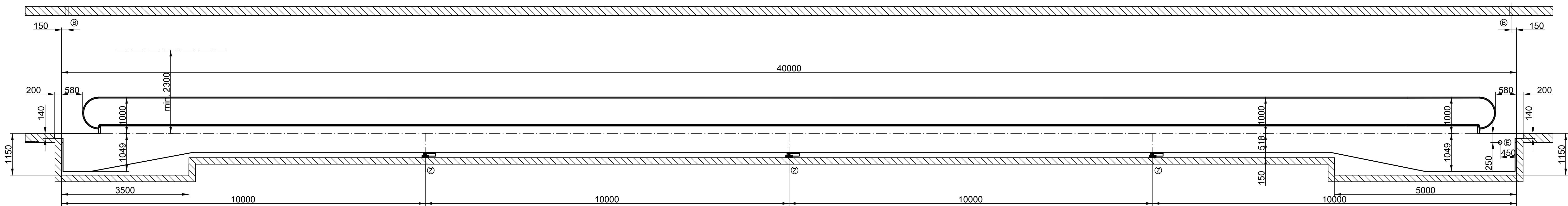
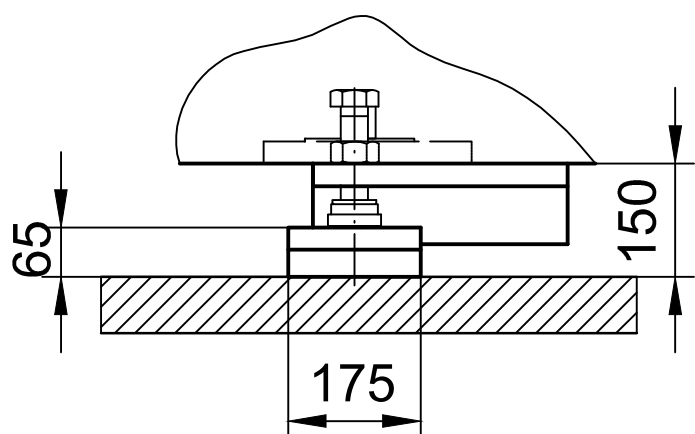


② Intermediate support



STANDARD-ARRANGEMENT- EN 115	
TECHNICAL DATA	
Pallets width (S) [mm]	1600
Total width of moving walk (B) [mm]	2148
Floor opening (D) [mm]	2208
Inclination [°]	0
Rise [mm]	0
Speed [m/s]	0,5
Flat pallets [mm]	—
Capacity (Fresh) diagonal dimension S [mm]	6000
Torsional moment per adjusting screw	40000
Intermediate support	123 / 98 / 126

MATERIAL AND FINISHES	
Pallets	Aluminium diecast
Handrail colour	Black
Combs	Aluminium diecast
Complate surface	Aluminium with transverse grooves
Cover Plate	Aluminium with transverse grooves
Balustrade	rectangular joints
Balustrade material	Clear glass
Balustrade decking	—
Interior profile	Aluminium
Exterior profile	Aluminium

ELECTRICAL DATA	
Power Supply	50 Hz
Drive motor [V]	230/400
Lighting [A]	7
Socket [V]	—
Motor - capacity [kW]	6
Motor nominal current [A]	13
Motor starting current [A]	72
Heating - capacity [kW]	0.0

TO BE PROVIDED BY OTHERS (Observation of all Standards, guidelines acc. to each specific country)

Clear access route into the building 3,5 x 3,5 m

access route must be obstruction free

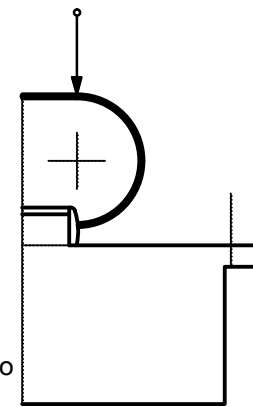
⑥ Electric mains up to upper part of moving walk

Free cable ends 1500mm long

⑥ Lifting points by others

loading per point 50 kN

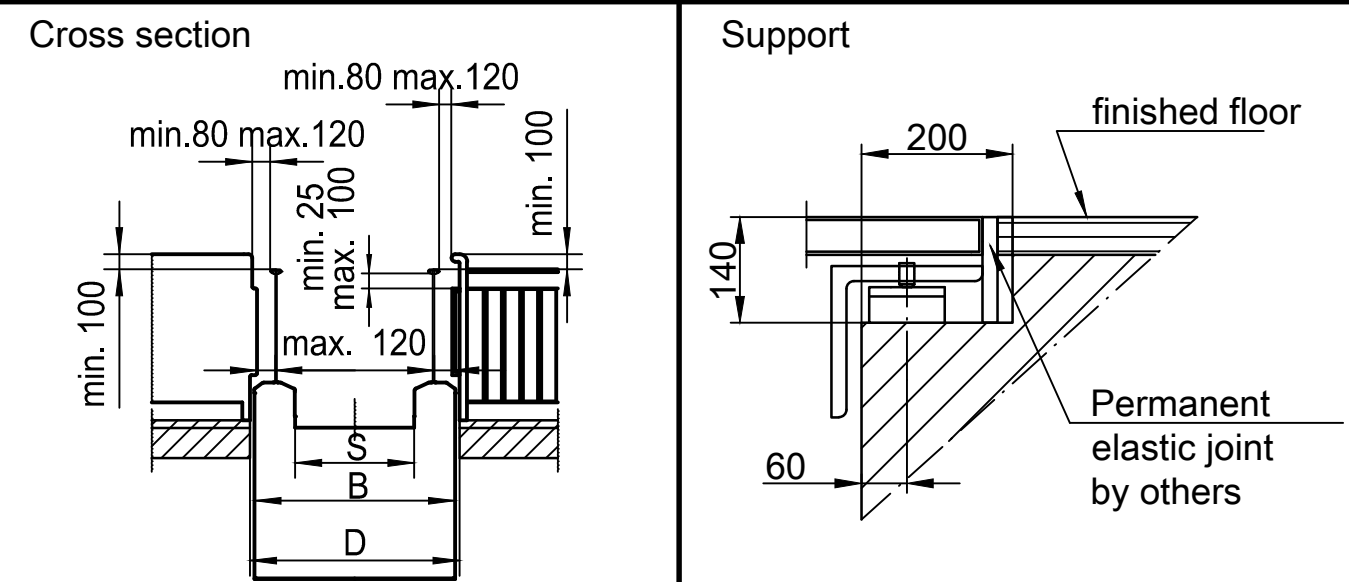
A railing reaching right to the moving walk balustrades must be mounted according to EN 115-1 2008 A2.7. This railing must be designed to prevent people from falling down the balustrades when they let themselves being dragged by the handrail. The entry to the moving walk handrail must be prevented. Barrier plates do not perform the function of a protective railing! See detail cross section!



Walls, ceilings and obstacles that are accessible from the escalator must be carried out acc. to EN 115-1, EN ISO 13857 and EN 349.

© (thyssenkrupp Fahrtreppen GmbH 2016)

ThyssenKrupp Fahrtreppen



Tolerance which have to be kept by others

Deviations in mm for distance at the measuring points

	to	4m	10m	25m	50m	100m
		± 5	± 10	± 15	± 20	± 30
1	Modifications					
2						
3						
4						
5						
6						
7						
8						
9						
10						

orinoco xtra 8 EK - 1600mm 0°

HH-2013116-R01 100 - 1  
orinoco 200+

Installation of an moving walk

E12060574-00

SCALE 1:50 1:10



Drawing to be approved by:  
Site delivery Date:  
Delivery details:

THIS DRAWING MUST BE APPROVED BY  
THE CLIENT/CONTRACTOR PRIOR THE  
ESCALATORS BEING MANUFACTURE