

Elevator Technology

# AGILE

For quicker, smarter, more flexible elevators



thyssenkrupp



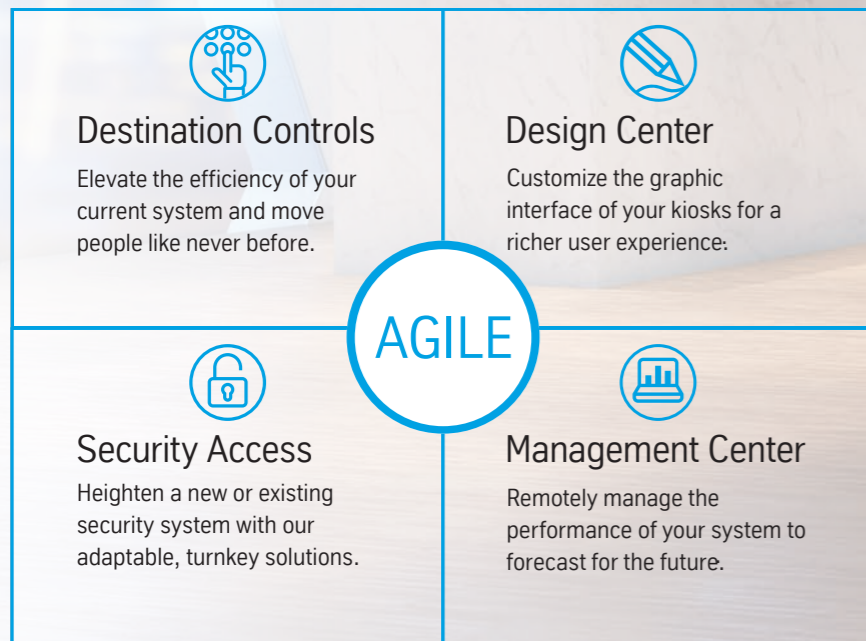
# This is AGILE.

## Four intelligent elements to enhance your elevators.

Introducing AGILE — an innovative family of elevator enhancers from thyssenkrupp that's designed to make your elevator system quicker, smarter and more flexible.

With smarter elevator operation, you'll be able to make your building more efficient. With customization, you'll be able to make it yours. With flexible security, you'll be able to better control access. With comprehensive data and reporting, you'll be able to make it a better elevator experience for both passengers and management.

This solution includes four intelligent elements that can improve performance, enhance aesthetics reduce traffic and much more:





Enhance  
efficiency.  
Reduce  
traffic.

## AGILE Destination Controls

Transporting passengers has never been this intuitive and efficient.

Add this highly-adaptable solution to your new or existing elevator systems and provide tenants with shorter ride times, fewer stops and less congestion.

- ➔ Dedicates elevators to specific high-traffic areas as user demand changes
- ➔ Moves large tenant populations during peak hours
- ➔ Gives tenants private and priority elevator service
- ➔ Saves energy during periods of low demand
- ➔ Controls elevators independently
- ➔ Features customizable, user-friendly kiosks

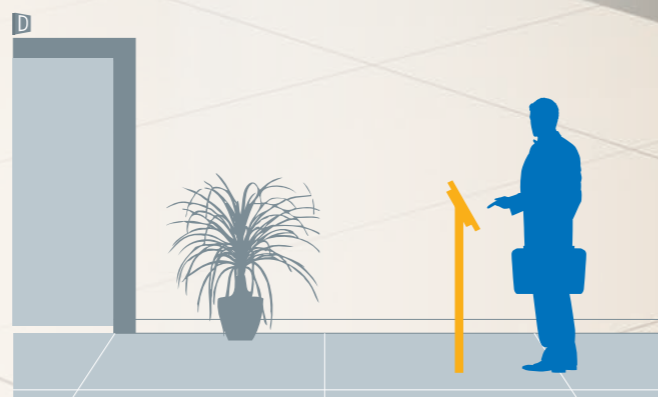
Up to 30 percent more  
traffic-handling capacity and  
25 percent less elevator travel time  
than traditional elevator dispatching

# Intelligence going up.

Here's the new arrangement. AGILE – Destination Controls intelligently groups passengers who are traveling to similar floor destinations together. Unlike traditional operation, a floor is chosen at the kiosk and the intelligent dispatching software analyzes the request — gauging traffic demand and grouping passengers based on similarity of destination. This leads to less crowding, fewer stops and a more efficient use of available elevator capacity.

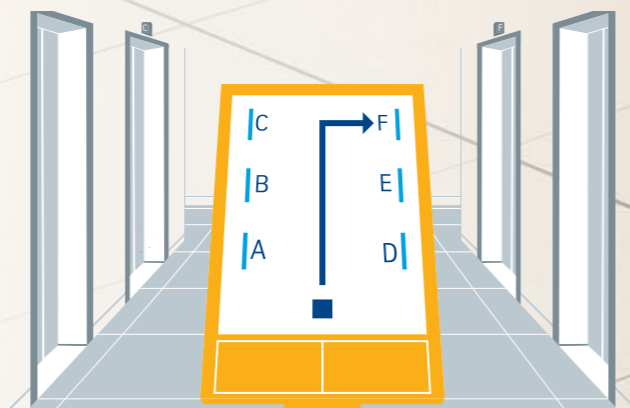
## Step 1

Passengers use the kiosk to select their floor. You can add custom button labels and logos to make the process even easier.



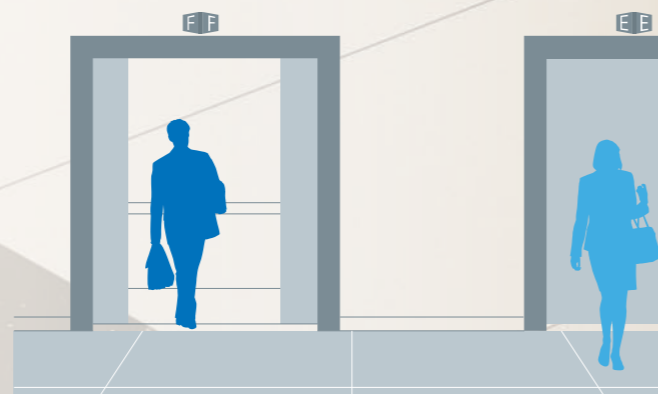
## Step 2

AGILE clearly directs each passenger to an assigned elevator.



## Step 3


Passengers board the assigned elevator that transports them to their destination fastest.



# Organize chaos. Orchestrate movement.

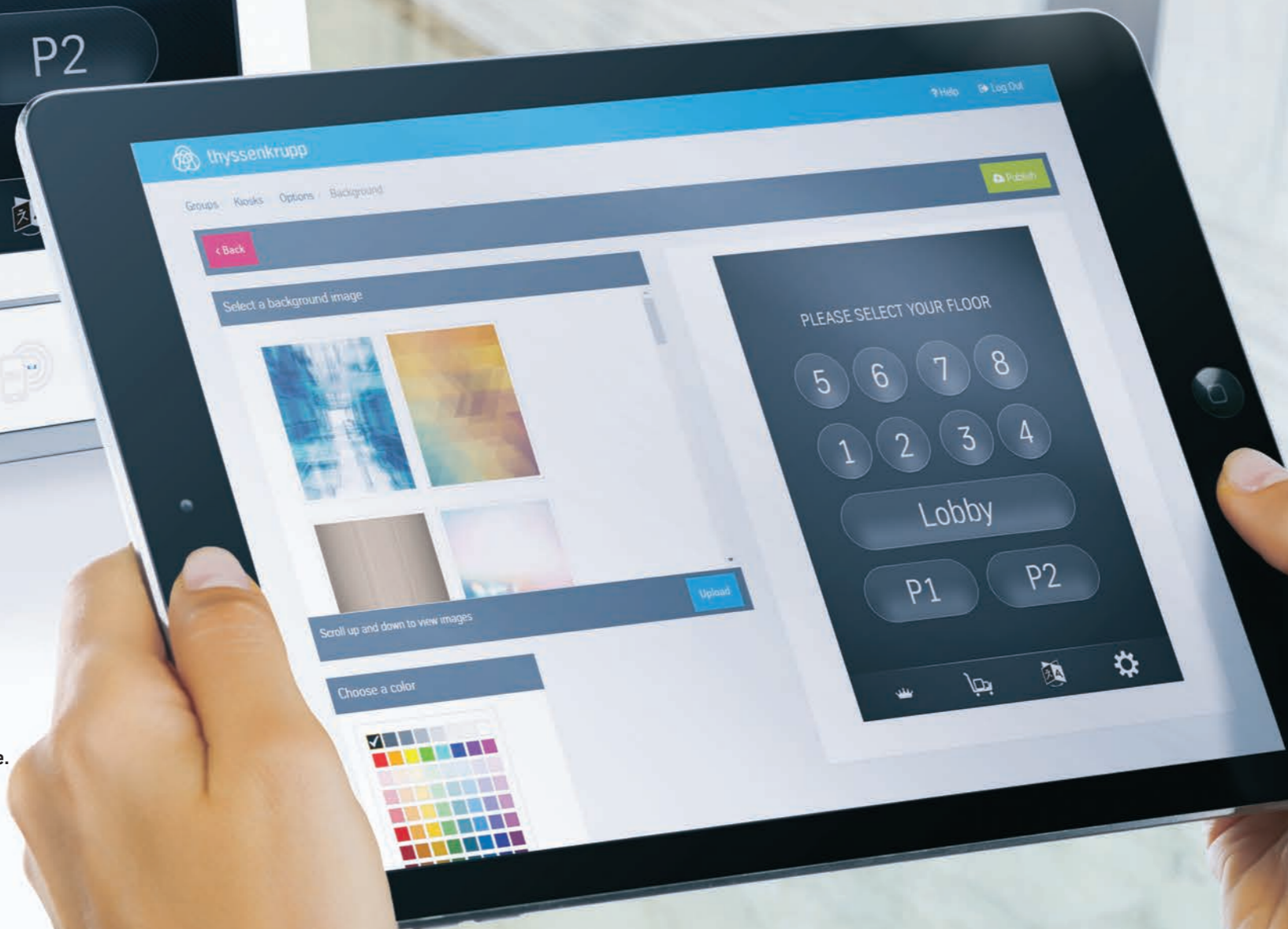


Custom  
navigation.  
Intuitive  
operation.

AGILE  
Design  
Center 

Tailor your touchscreens and kiosks to reflect your brand identity.

Easily customize the touchscreens that direct elevator passengers to their destination. Clear, concise graphics make the kiosk easy for passengers to use. Plus, user-friendly software enables you to personalize screen designs. You can do all this on a PC or remotely via handheld devices.



# Your touchscreen. Your touch.

## Get the message

AGILE – Design Center enables you to post both permanent or temporary, topical messages for tenants.

## Compose your theme

Choose from our library of existing theme layouts or upload your own images, logos and more.

## It's all in the numbers

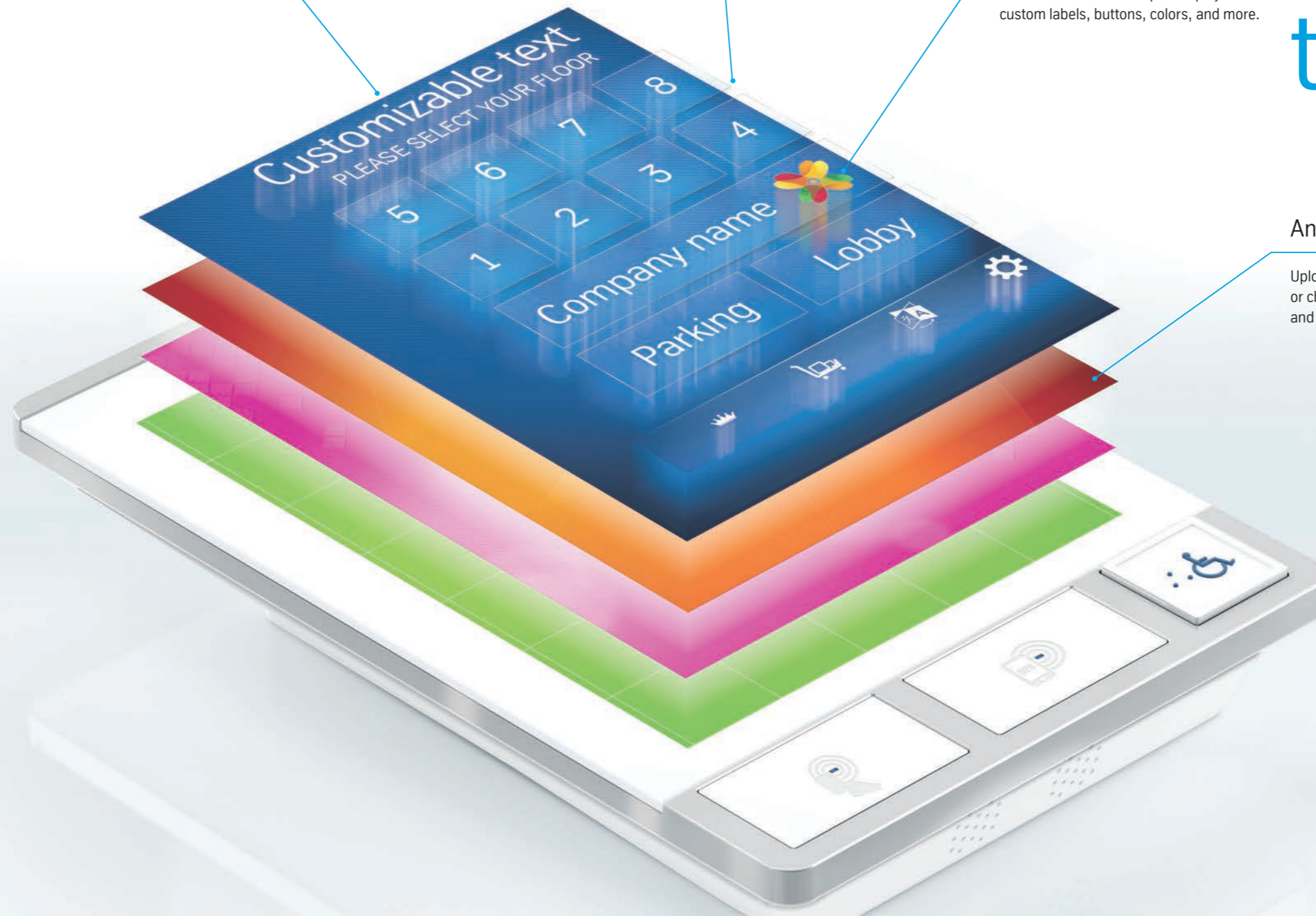
Personalize the number pad display with custom labels, buttons, colors, and more.

## An impressive background

Upload your own background images or choose from pre-loaded designs and colors.

Choose from existing pre-loaded themes and backgrounds or personalize your look by uploading images and messages.

With the AGILE – Design Center, building management can create customized touchscreens that are easy for passengers to use — on one kiosk at a time, selected kiosks or all kiosks at once.



# AGILE Security Access

Easily integrated solutions for a heightened sense of security.

**This economical solution to security access connects your elevators to tenant databases so you can easily safeguard your building. Our flexible solution can function independently or integrate with an existing security system utilizing your existing wiring infrastructure.**

- ⌚ Meet your desired level of security access with different options
- ⌚ No need to redesign wiring infrastructure in your building
- ⌚ Control security on turnstiles and elevators
- ⌚ Create and edit tenant profiles
- ⌚ Secure access with AGILE – Destination Controls kiosks standard card readers

# Maximize security. Minimize headaches.



# AGILE Management Center

Optimize performance and adapt to tenant demands.

**The AGILE – Management Center lets you optimize equipment performance and adapt to changing needs from anywhere in your building. Survey traffic, disable and enable operation, view status and control access to certain floors for a specified time. Assign how many elevators service a specific floor and when.**

Use the data to make smarter decisions. Determine trends by analyzing passenger wait and travel times. Identify peak demand times and locations. Set up specific intervals to monitor elevator traffic. Generate summaries that show performance statistics for the average and longest waiting times, destination times and total passenger demand.

# Real-time data. Real-world benefits.







# You've seen what AGILE can do. Now we'll show you what it can do for your building.

We've taken the concept of destination dispatch and expanded it in new ways to create our new AGILE elevator enhancers. It's all about providing you with more benefits, from cost savings to controls to customization.

AGILE enables you to get passengers to their destinations faster than ever. You can customize your elevators to provide a personalized experience as unique as your building. Integrate the adaptable security solution into your existing system or use it on its own to supervise access. And manage equipment performance to help your elevator system reach its maximum efficiency.

## Unique benefits for specific building types.

Depending on the type of building, AGILE offers a variety of distinct advantages that can help with building management and ensure an improved experience for your elevator passengers.

### Office buildings

Employees in an office building can get to their destinations faster when they come to work, because you can maximize elevator efficiency during peak times.

### Hotels

Hotel managers can improve the guest experience by delivering luggage and room service to rooms quicker than ever via priority elevator access.

### Hospital

When seconds can mean life and death in a hospital, you can ensure surgeons and medical staff get to their destination faster with access to designated elevators.

### Residential buildings

Tenants want to feel safe in their homes — that's why we provide design flexibility and intelligent security solutions.

Read on to see how the AGILE technology provides even more benefits for offices, hospitals, hotels and residential buildings. Some (or all) of these advantages may apply to your building as well!

A man in a dark suit, white shirt, and dark tie stands in profile, looking out a large window at a vast city skyline under a hazy sky. The man has short dark hair and glasses. The window frame is visible on the left and right sides of the image.

# Moving employees. Expanding opportunities.

## Office buildings



- ➞ Enable employees and visitors to arrive at their offices more efficiently than ever
- ➞ Provide easy-to-use, customizable kiosks for quick directions to building destinations
- ➞ Impress tenants and visitors with faster arrivals and customized messaging
- ➞ Arrange designated elevator cars exclusively for upper-level tenants, building representatives, leasing agents or for staff members
- ➞ Integrate AGILE - Security Access with existing systems or as its own stand-alone system, using a third-party card reader, password or/and PIN
- ➞ Improve energy efficiency and cost savings with traffic pattern analysis and usage controls
- ➞ Designate specific elevator cars (or groups of cars) to help tenants move in and out more easily

# Efficient operation. Surgical precision.

## Hospitals



- ➔ Expedite the transport of trauma patients from helipads and emergency rooms
- ➔ Provide and limit access to specific areas, such as the intensive care unit and the nursery
- ➔ Allow food service, linen service and maintenance crews quick access to designated floors
- ➔ Provide exclusive access to safeguard patients against exposure to possible infections
- ➔ Grant priority access to certain personnel, such as surgeons or specialists
- ➔ Customize the display appearance for the building with special messaging to alert staff to on-site meetings or gatherings
- ➔ Optimize staff time, customer service and patient relations with more efficient elevator travel time
- ➔ Designate an elevator car for specific functions, such as cleaning or maintenance



# Less waiting. More hospitality.

## Hotels



- ➞ Provide priority access for housekeeping staff to transport linens and cleaning supplies to guest rooms for faster room turnover
- ➞ Grant catering and room service employees quick access to ballrooms and restaurants
- ➞ Capture elevator cars for cleaning and maintenance
- ➞ Enhance security for hotel guests
- ➞ Designate specific elevators to service the fitness center and pool, as well as restaurants and bars
- ➞ Expedite luggage delivery to improve guest experience
- ➞ Set apart VIP hotel guests from others, providing security and head-of-line privileges
- ➞ Create specific messaging for hotel guests to promote special events
- ➞ Customize kiosks that provide directions to common hotel destinations and to match the hotel's unique brand

# High-rise. High-efficiency.



## Residential buildings



- Integrate with existing or new security systems and hardware
- Separate access for specific tenants - i.e., VIP access for VIP tenants
- Reduce tenant inconvenience by providing exclusive access for move-in and move-out
- Provide quick, exclusive access for maintenance and housekeeping crews
- Allow for express transport from underground parking garages

# thyssenkrupp moves people – the future of urban mobility.

In 40 short years, we've become one of the world's leading elevator companies with unique engineering capabilities, offering next-generation solutions like MULTI, the ropeless elevator, ACCEL, an accelerated people mover, and MAX, a cloud-based predictive maintenance service. Whether building a new state-of-the-art system or optimizing and modernizing existing ones, our solutions deliver crucial energy and time efficiencies, helping to address the challenges of urbanization and transform cities into the best places to live.

Customers in  
**150**  
countries

Over 900  
sales and  
service  
locations

Sales of over  
**€ 7.5** billion

**50,000+**  
employees

Figures for our Elevator Technology business

## A trusted partner

We support our customers throughout their project lifecycle, from the design to the end-of-life phase. Every step of the way, we strive to fully understand their needs and consistently deliver the safest, highest quality passenger transportation solutions, maintenance and modernization packages.

Through our internal technical support function, ITS (International Technical Services), thyssenkrupp trains its service technicians in a multibrand portfolio, enabling them to successfully service more than 1.2 million units under maintenance.

## thyssenkrupp – the diversified industrial group

engineering.tomorrow.together – three words that describe who we are, what we do, and how we do it. Driven by global megatrends such as urbanization and the need for efficient use of environmental resources, our global community of more than 156,000 colleagues works together with our customers to harness our engineering expertise and strive for technological and business solutions that satisfy the demand for “more” in a “better” way.

Find out more: [www.thyssenkrupp.com](http://www.thyssenkrupp.com)



One World Trade Center



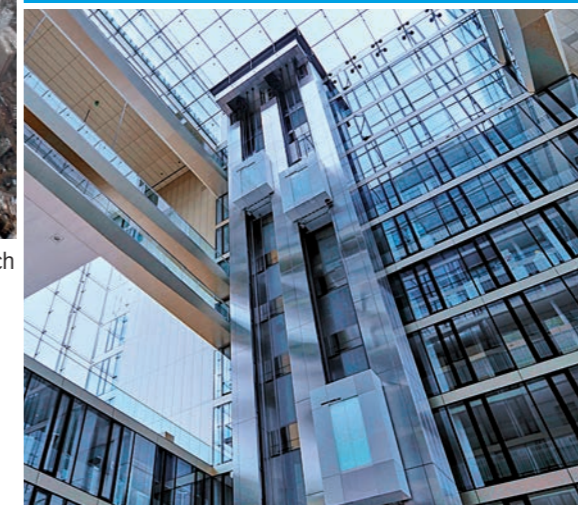
Makkah Clock Tower / Source © SL Rasch

We provide smart and innovative products for a wide variety of applications:

- Passenger and freight elevators
- Escalators and moving walks
- Passenger boarding bridges
- Stair and platform lifts
- Customized service and modernization solutions



Mercedes Benz



thyssenkrupp Quartier

# Elevator Technology

thyssenkrupp Elevator Corporation  
2591 Dallas Parkway, Suite 600  
Frisco, TX 75034  
P: +1 844 427 5461  
www.thyssenkruppelevator.com



engineering.tomorrow.together.

All illustrations and specifications are based on information in effect at time of publication approval.  
thyssenkrupp Elevator reserves the right to change specifications or design and to discontinue items without prior notice or obligation.  
© 2017 thyssenkrupp Elevator Corporation. CA License #C11-651371 | 436 | AGILE overview brochure