

ADVENTURES

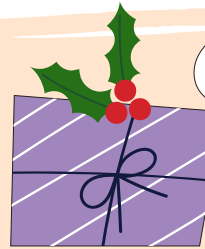
IN

SAFETY

ISSUE 16



" THIS TIME OF
THE YEAR IS BUSY



AND THE DAYS GO BY QUICKLY, BUT ITS ALSO TIME TO SLOW DOWN. IF YOU'RE HEADING TO THE MALL OR AIRPORT, MAKE SURE YOU ALWAYS PAY ATTENTION TO YOUR SURROUNDINGS AND STICK CLOSE TO YOUR PARENTS/GUARDIANS. WISHING YOU A HAPPY AND SAFE HOLIDAY SEASON!



YOUR FRIEND,
DIEGO

"



**SAFETY
TIP!**

DON'T PRESS RANDOM BUTTONS
IN AN ELEVATOR, DOING SO COULD
TRIGGER ITS **SECURITY MEASURES!**



HO HO HO

WHAT DO
SNOWMEN EAT
FOR BREAKFAST?

FROSTED FLAKES





We have a special-edition
COMIC BOOK

OUR COMIC BOOK IS HERE JUST IN TIME FOR THE HOLIDAYS! IT HAS USEFUL TIPS FOR NAVIGATING A TRAIN STATION DURING THE BUSIEST TIME OF YEAR.



WORD SEARCH

Here's a special treat – a Christmas-themed word search:

1. COOKIES
2. CHEER
3. ELF
4. FAMILY
5. GIFTS
6. LIGHTS
7. LOVE
8. REINDEER
9. SANTA
10. SLEIGH
11. SNOW
12. TREE

BFSFDHEVMCOOKIESONROORSEU
 BLFAMILYWEEASVUNKOYREB ABCSA
 I YTREFBCMSDAERJCKDEPORFJCG
 OAKLSHDWYPANELPOHWQU WHOIAI
 LIGHTSISFHIREINDEERIAPLWCLF
 OKLTJNIPBCKEWYMEKSECOMWIAT
 VDAWCOASKLDJHGTREEFPPEIGNTS
 EWBELWFLKASILJBXWQLHVKIIOH
 SANTASJDEDLMCUSLEIGHWAVRU



FUN FACT

DURING THE HOLIDAY SEASON IN MASSACHUSETTS, NATICK MALL TRANSFORMS ONE OF ITS ELEVATORS INTO SANTA'S ELEVATOR EXPRESS AND TRANSPORTS FAMILIES TO THE NORTH POLE TO VISIT SANTA. HOW COOL!